



Multifunction Thermal Flywheel

SERIES ISPHCV 35-60-80



HEATING AND COOLING

The ISPHCV buffers designed for heating and cooling systems, work both as hydraulic circuit breaker and buffer tanks. Thanks to these features, the flow rates of the two circuits remain independent and minimize the heat pump on/off switchings. The range has additional connections dedicated to supplementary sources.



- Row carbon steel tank
- Designed for wall installation
- External casing made of sheet metal coated with epoxy powder paint
- High thermal insulation with ecological polyurethane hard foam (PU)
- Storage temperature range from 10 to 95 °C
- Energy efficiency class B
- Connection for 1" ½ electrical back-up heater
- 10 hydraulic connections for maximum flexibility of use

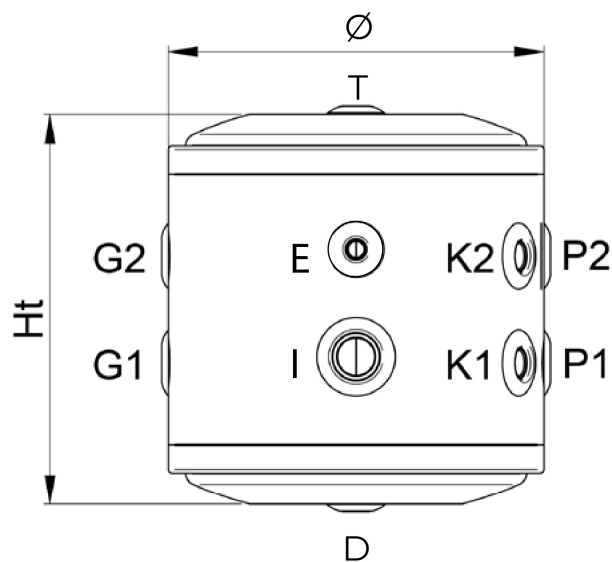
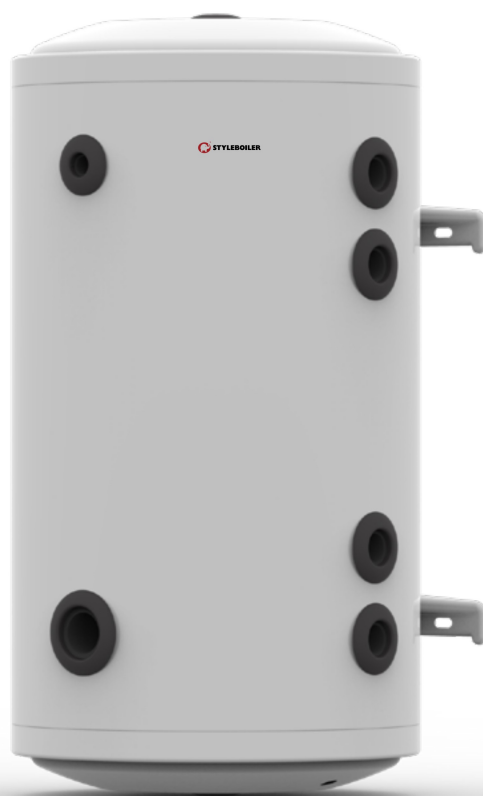
ErP Energy Class



WARRANTY:

- 2 YEARS ON THE TANK AND COMPONENTS

TECHNICAL DATA	U.M.	ISPHCV 35	ISPHCV 60	ISPHCV 80
Capacity	l	35	60	75
Code	/	172432	172433	172434
Insulation thickness	mm	≥ 50	≥ 50	≥ 50
Thermal insulation	-	Rigid polyurethane (PU) insulation layer		
ErP Energy Class	ErP	B	B	B
ErP Heat Loss Watt	W/h	36	40	45
Min. operating temperature	°C	-10	-10	-10
Max. operating temperature	°C	+95	+95	+95
Net weight	Kg	17	23	27
External Diameter (Ø)	mm	450	450	450
Height (Ht)	mm	468	699	850
Drain (D)	Rp	¾"	¾"	¾"
Sensor pocket/ thermometer connection (E)	Rp	½"	½"	½"
From Heating System (G1)	Rp	1"	1"	1"
To Heating System (G2)	Rp	1"	1"	1"
Immersion heater (I)	Rp	1"1/2	1"1/2	1"1/2
Auxiliary (K1)	Rp	1"	1"	1"
Auxiliary (K2)	Rp	1"	1"	1"
To energy source (P1)	Rp	1"	1"	1"
From energy source (P2)	Rp	1"	1"	1"
Air vent (T)	Rp	½"	½"	½"



	Ø	Ht	E	G1	G2	I	K1	K2	P1	P2
	mm	mm	mm	mm	mm	mm	mm	mm	mm	mm
ISPHCV 35	450	468	308	175	298	171	171	298	171	298
ISPHCV 60	450	699	538	175	529	171	271	429	171	529
ISPHCV 80	450	850	689	175	680	171	271	580	171	680